



SPECIFICATION

System Name	Carport Solar Mounting System
Ground Type	Flat ground
Tilt Angle	Recommend below 10°
Wind load	Up to 60m/s
Snow load	Up to 150cm
Applicable Solar Module	Framed
Design standard	BSEN, ASCE7-10, BS 6399, AS-NZS1170, GB50009 2012, MS 1553
Material	Al-6005-T6, SUS304/410
Color	Silver/Black
Warranty	10-year
Parking space	below 5600mm

FEATURE

1. Expertly designed with practical strength, quality and aesthetics, making it suitable for any setting.
2. Light Alu-material, pre-drilled or pre-assembled parts, making installation easier and more precise, saving time on-site.
3. Several unique patented drainage designs, ensuring the best waterproof system for parking.
4. Tailor-made anodized coatings ensuring the parking structure's long-term life span while facing different environments.

INSTALLATION NOTE

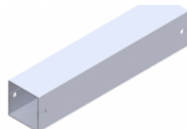


Carport shape follow different design datas

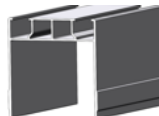
COMPONENT



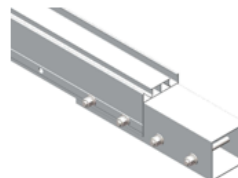
Base



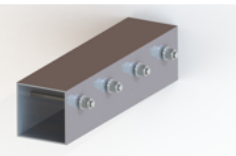
Pole



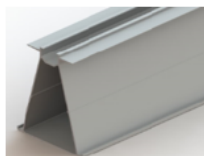
Beam



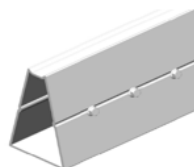
Beam & splice



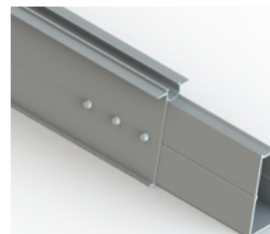
Beam splice



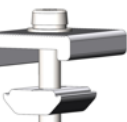
Rail



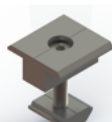
Rail splice



Rail & splice



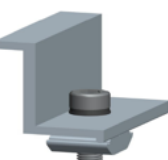
Rail clamp



Mid clamp



Grounding clip



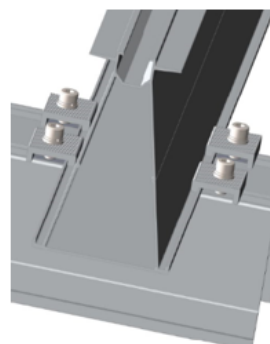
End clamp



Grounding lug



Eyelet Bolts



Rail clamp fixture